



# JICA Grassroot Project

**Kyoto University, Japan**



**University of Ghana**

Enhancing Livelihoods in Ghana through Improvement  
in Native Livestock Production



More information

E-mail: [ghana.grasscutter@gmail.com](mailto:ghana.grasscutter@gmail.com)

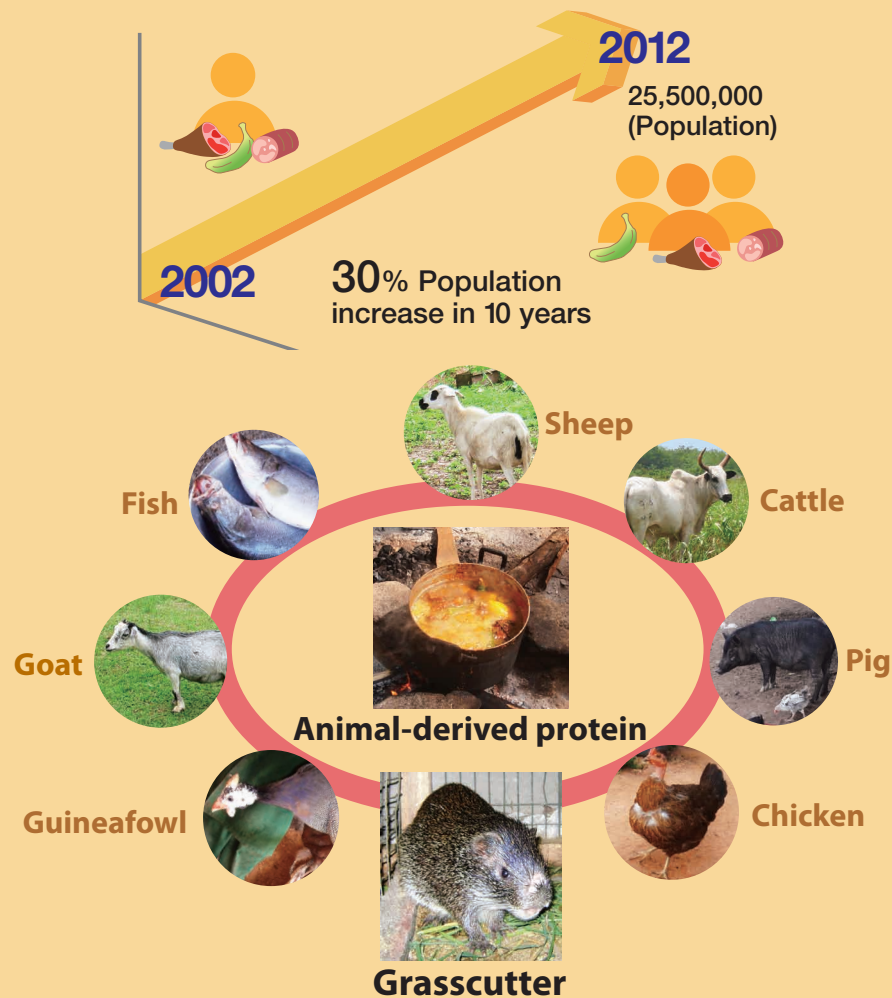
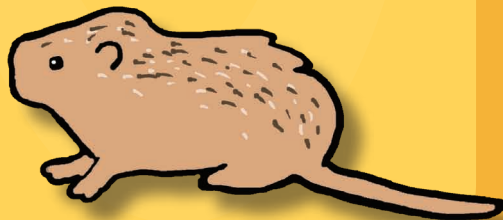
<http://grasscutter.sakuraweb.com/>



1

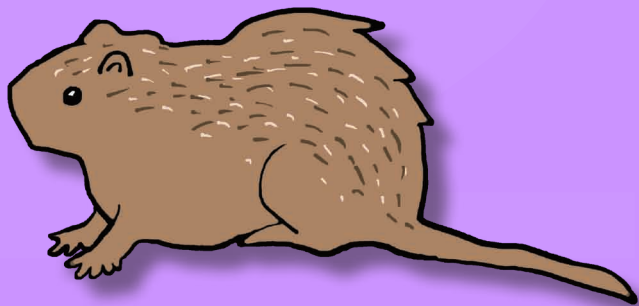
# Importance of grasscutter

Ghanaian population increased by 30% in the last decade, therefore balanced and stable food supply is not enough especially in the northern part of the country. To solve the problem of food insecurity, increase of not only crops but also animal protein resource is important. Grasscutter is a fairly large rodent originated in Ghana. Its meat is a delicacy. The animal is prolific, hardy and can adapt to the harsh climatic condition in the north. Grasscutter rearing has the potential to alleviate poverty.



# 2 Why domestication?

Currently, a large number of people rely on wild-derived animal resources for their protein supply, which is not sustainable. High hunting pressure results in the decrease of wildlife resources, environmental degradation and raises the risk of zoonotic infectious diseases. Therefore, securing of sustainable animal protein source as an alternative for the wild animals is urgent.



Damage to wildlife



Zoonotic infectious diseases



Damage to environment



Bush fire

# 3 How to keep grasscutter?

Grasscutters are kept in wire and wooden cages and fed guinea grass and elephant grass. We support model farmers to start keeping grasscutters. Specifically, we are engaged in the supply of founder grasscutters which are tame and have high reproductive ability; technical support for fodder supply, breeding, maintenance of cages, etc. Model farmers will teach other community members who will be interested in keeping grasscutters.



Keeping facility



Tame grasscutter



Year 1

15 offspring



$\frac{12}{15}$  for eating or selling

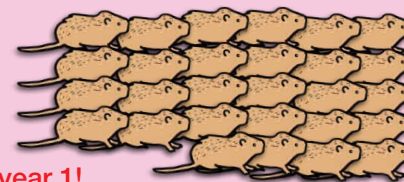


Add  $\frac{3}{15}$  for reproduction

Year 2

30 offspring

Doubled from year 1!



$\frac{28}{30}$  for eating or selling or reproducing



$\frac{2}{30}$  a pair to be given to another farmer

Year 3-



Stable income and protein supply



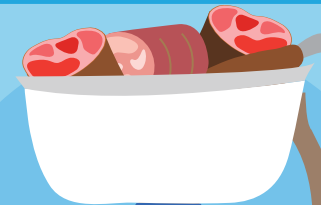


# 4 How to use grasscutter?

Reproduced grasscutters can be sold or processed for domestic consumption to address household protein deficiency. We will have a seminar for cooking and processing to preserve the meat for a long time. We will show how the meat can be processed into different forms.



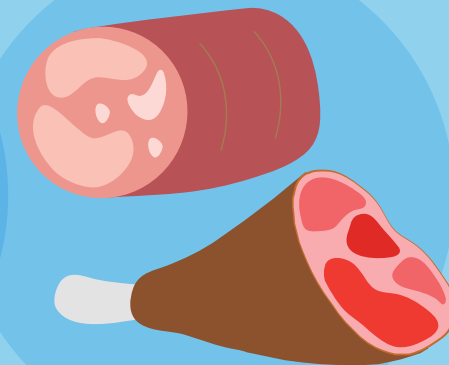
Cooking



Marketing



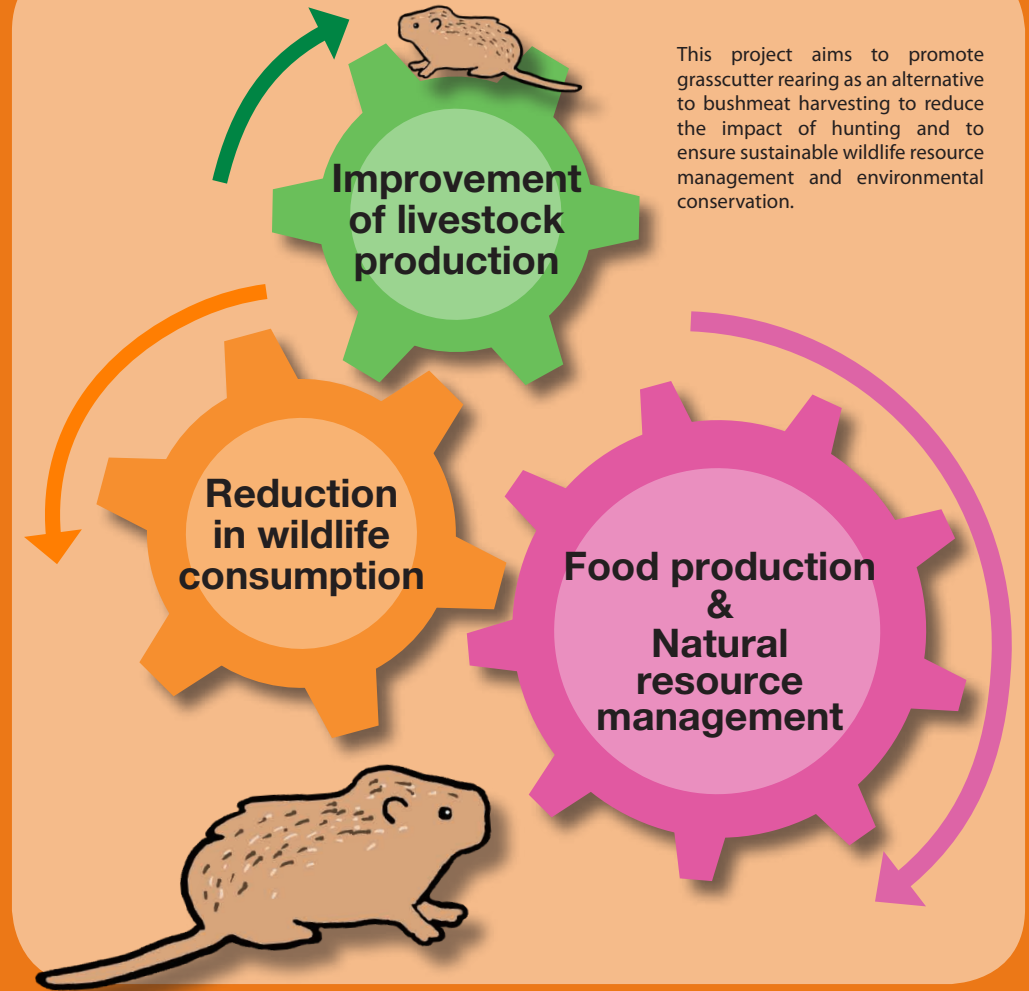
Preservation



Processing

# 5 Our goal

**Local communities will be empowered through efficient sustainable nutrient supply and education for environmental conservation. Local communities will be empowered to keep grasscutters as an additional source of income.**



This project aims to promote grasscutter rearing as an alternative to bushmeat harvesting to reduce the impact of hunting and to ensure sustainable wildlife resource management and environmental conservation.